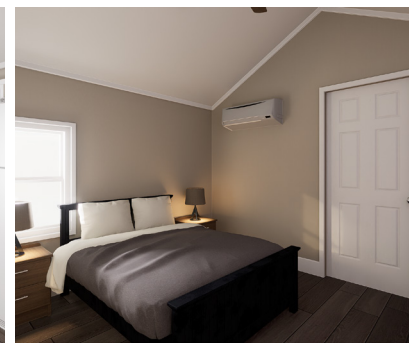




Okefenokee Cottage Park Model
34' X 11' (44' X 11' with Porch)



STANDARD FEATURES:

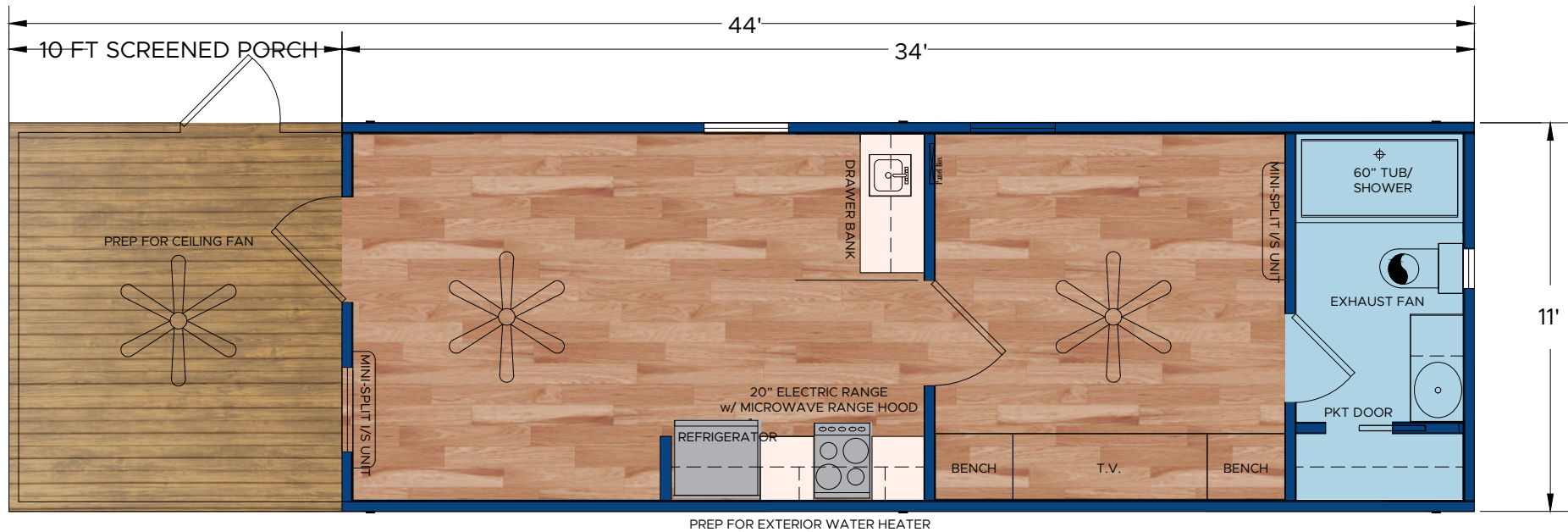
- Steel I-Beam Chassis with Removable Hitch, Axles & Tires
- 2X6 Southern Yellow Pine Floor Joists (16-Inches on Center)
- R-22 Floor, R-13 Wall & R-19 Roof Insulation
- 3/4-Inch Advantech Subfloor Glued, Stapled and Screwed
- Full House Moisture Barrier
- Woodgrain Vinyl Flooring
- Low-E Vinyl Windows
- Fiber Cement Board Exterior Siding in a Variety of Colors
- 29-Gauge Galvalum, Red, or Green Metal Roof
- 2X4 Walls (16-Inches on Center)
- 1/4-Inch Wood Panel Interior
- Engineered Truss System
- PVC Drain Plumbing & PEX Potable Plumbing
- Water Supply Cut-Off Valves at Each Fixture
- Premium Faucets in a variety of finishes
- Fiberglass Shower with Curtain
- Exterior GFI Outlet
- LED Interior Lights
- Ceiling Fans in Bedrooms & Living Areas
- Solid Wood Cabinetry with Raised Panel Doors
- 20-Gallon Electric Water Heater
- 100-Amp Electric Panel
- 20" Electric Range with Microwave Range Hood
- Laminate Countertops with Wood Edging
- Fiberglass Exterior Doors with Privacy Blinds
- Hotel Style HVAC Cut-Out & Electrical Wiring
- Fullsize Refrigerator

\$62,354 OKEFENOKEE PARK MODEL FLOOR PLAN

Base Price

34' X 11' (44' X 11' with Optional Porch)

VACAVIA[®]
COTTAGES & CABINS



OKEFENOKEE STANDARD FEATURES

- ❖ Steel I-Beam Chassis with Removable Hitch, Axles & Tires
- ❖ 2X6 Southern Yellow Pine Floor Joists (16-Inches on Center)
- ❖ R-22 Floor, R-13 Wall & R-19 Roof Insulation
- ❖ 3/4-Inch Advantech Subfloor Glued, Stapled and Screwed
- ❖ Full House Moisture Barrier
- ❖ Woodgrain Vinyl Flooring
- ❖ Low-E Vinyl Windows
- ❖ Fiber Cement Board Exterior Siding in a Variety of Colors
- ❖ 29-Gauge Galvalum, Red, or Green Metal Roof
- ❖ 2X4 Walls (16-Inches on Center)
- ❖ 1/4-Inch Wood Panel Interior
- ❖ Engineered Truss System
- ❖ PVC Drain Plumbing & PEX Potable Plumbing
- ❖ Water Supply Cut-Off Valves at Each Fixture

- ❖ Premium Faucets in a variety of finishes
- ❖ Fiberglass Shower with Curtain
- ❖ Exterior GFI Outlet
- ❖ LED Interior Lights
- ❖ Ceiling Fans in Bedrooms & Living Areas
- ❖ Solid Wood Cabinetry with Raised Panel Doors
- ❖ 20-Gallon Electric Water Heater
- ❖ 100-Amp Electric Panel
- ❖ 20" Electric Range with Microwave with Range Hood
- ❖ Laminate Countertops with Wood Edging
- ❖ Fiberglass Exterior Doors with Privacy Blinds
- ❖ Mini-Split I/S Unit & Electrical Wiring
- ❖ Fullsize Refrigerator
- ❖ Exterior Faucet

AVAILABLE OPTIONS

- ❖ Vinyl Wrapped Drywall
- ❖ 50-Amp RV Style Power Cord
- ❖ Exposed 2X4 Rafters
- ❖ Solid Surface Countertops
- ❖ Wood Framed Bunkbeds
- ❖ Luxury Bedroom Furniture Package
- ❖ Hotel Style HVAC Unit
- ❖ Engineered Wood Flooring
- ❖ Luxury Vinyl Plank Flooring
- ❖ 10-Foot Porch
- ❖ 29-Gauge Painted Metal Roof
- ❖ Gas Range
- ❖ Gas On Demand Water Heater