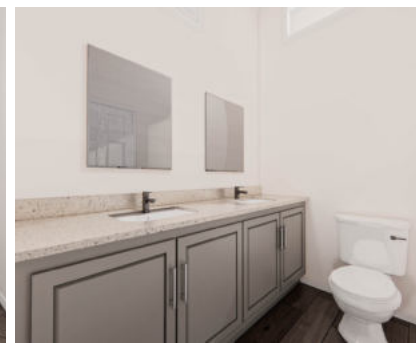
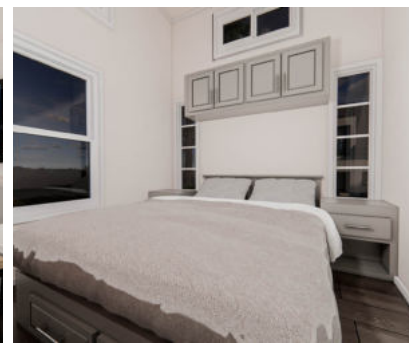




Signature Series Cottage Park Model
36' X 11' (46' X 11' with Porch)

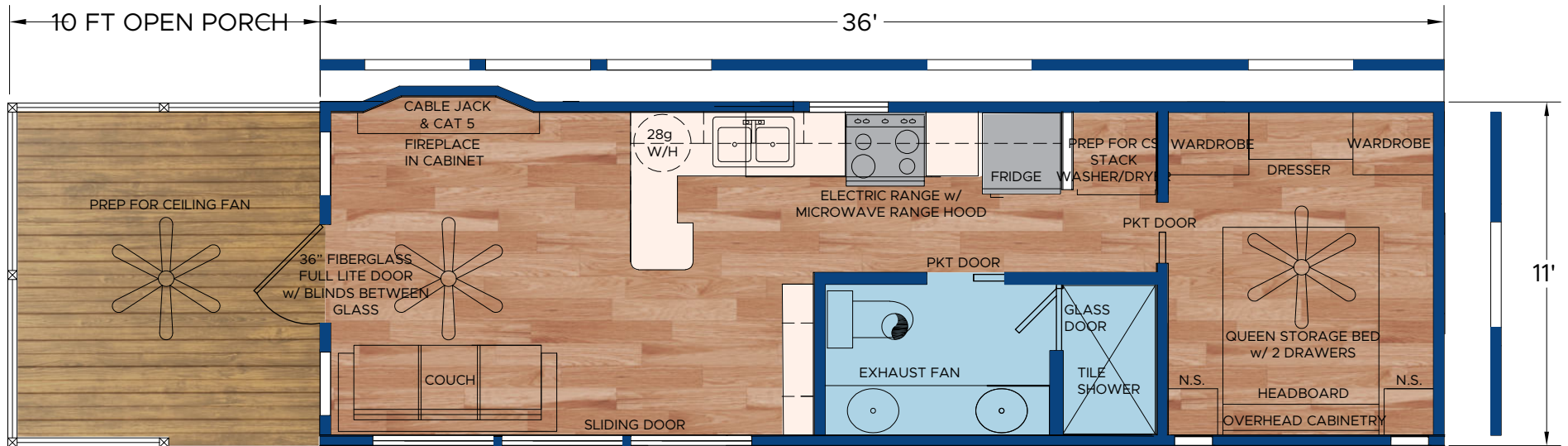


STANDARD FEATURES:

- Steel I-Beam Chassis with Removable Hitch, Axles & Tires
- 2X6 Southern Yellow Pine Floor Joists (16-Inches on Center)
- R-22 Floor, R-13 Wall & R-19 Roof Insulation
- 3/4-Inch Advantech Subfloor Glued, Stapled and Screwed
- Full House Moisture Barrier
- Woodgrain Vinyl Flooring
- Low-E Vinyl Windows
- Fiber Cement Board Exterior Siding in a Variety of Colors
- 29-Gauge Galvalum, Red, or Green Metal Roof
- 2X4 Walls (16-Inches on Center)
- 1/4-Inch Wood Panel Interior
- Engineered Truss System
- PVC Drain Plumbing & PEX Potable Plumbing
- Water Supply Cut-Off Valves at Each Fixture
- Premium Faucets in a variety of finishes
- Corner Glass Enclosed Shower
- Exterior GFI Outlet
- LED Interior Lights
- Ceiling Fans in Bedrooms & Living Areas
- Solid Wood Cabinetry with Raised Panel Doors
- 28-Gallon Electric Water Heater
- 100-Amp Electric Panel
- 30-inch Fridge & Full-size Electric Range
- Laminate Countertops with Wood Edging
- Fiberglass Exterior Doors with Privacy Blinds
- Hotel Style HVAC Cut-Out & Electrical Wiring
- Microwave with Range Hood

SIGNATURE SERIES PARK MODEL FLOOR PLAN

36' X 11' (46' X 11' with Porch)



SIGNATURE SERIES STANDARD FEATURES

- ❖ Steel I-Beam Chassis with Removable Hitch, Axles & Tires
- ❖ 2X6 Southern Yellow Pine Floor Joists (16-Inches on Center)
- ❖ R-22 Floor, R-13 Wall & R-19 Roof Insulation
- ❖ 3/4-Inch Advantech Subfloor Glued, Stapled and Screwed
- ❖ Full House Moisture Barrier
- ❖ Woodgrain Vinyl Flooring
- ❖ Low-E Vinyl Windows
- ❖ Fiber Cement Board Exterior Siding in a Variety of Colors
- ❖ 29-Gauge Galvalum, Red, or Green Metal Roof
- ❖ 2X4 Walls (16-Inches on Center)
- ❖ 1/4-Inch Wood Panel Interior
- ❖ Engineered Truss System
- ❖ PVC Drain Plumbing & PEX Potable Plumbing
- ❖ Water Supply Cut-Off Valves at Each Fixture

- ❖ Brass Faucets
- ❖ Fiberglass Shower with Curtain
- ❖ Exterior GFI Outlet
- ❖ LED Interior Lights
- ❖ Ceiling Fans in Bedrooms & Living Areas
- ❖ Solid Wood Cabinetry with Raised Panel Doors
- ❖ 20-Gallon Electric Water Heater
- ❖ 100-Amp Electric Panel
- ❖ 30-Inch Fridge & Full-Size Electric Range
- ❖ Laminate Countertops with Wood Edging
- ❖ Fiberglass Exterior Doors with Privacy Blinds
- ❖ Hotel Style HVAC Cut-Out & Electrical Wiring
- ❖ Microwave with Range Hood
- ❖ Fireplace in Cabinet

AVAILABLE OPTIONS

- ❖ Vinyl Wrapped Drywall
- ❖ 50-Amp RV Style Power Cord
- ❖ Exposed 2X4 Rafters
- ❖ Solid Surface Countertops
- ❖ Wood Framed Bunkbeds
- ❖ Headboard, Nightstands & Closet
- ❖ Hotel Style HVAC Unit
- ❖ Engineered Wood Flooring
- ❖ Luxury Vinyl Plank Flooring
- ❖ 8-Foot Porch
- ❖ Exterior Faucet
- ❖ 29-Gauge Painted Metal Roof
- ❖ Gas Range
- ❖ Gas On Demand Water Heater