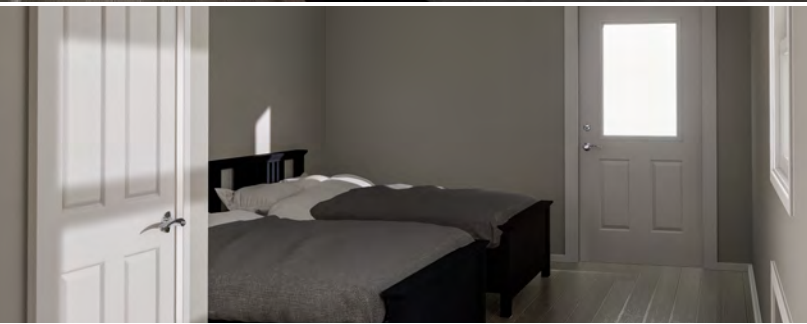
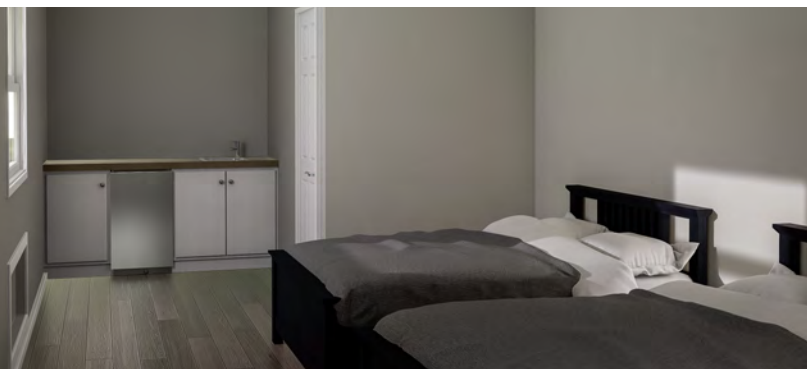




Suwannee River Cottage Park Model

24' x 11'8"



SUWANNEE RIVER PARK MODEL FLOOR PLAN

24' X 11'8"

VACAVIA
COTTAGES & CABINS



SUWANNEE RIVER STANDARD FEATURES

- ❖ Steel I-Beam Chassis with Removable Hitch, Axles & Tires
- ❖ 2X6 Southern Yellow Pine Floor Joists (16-Inches on Center)
- ❖ R-22 Floor, R-13 Wall & R-19 Roof Insulation
- ❖ 3/4-Inch Advantech Subfloor Glued, Stapled and Screwed
- ❖ Full House Moisture Barrier
- ❖ Woodgrain Vinyl Flooring
- ❖ Low-E Vinyl Windows
- ❖ Fiber Cement Board Exterior Siding in a Variety of Colors
- ❖ 29-Gauge Galvalum, Red, or Green Metal Roof
- ❖ 2X4 Walls (16-Inches on Center)
- ❖ Vinyl sheetrock walls
- ❖ Engineered Truss System
- ❖ PVC Drain Plumbing & PEX Potable Plumbing
- ❖ Water Supply Cut-Off Valves at Each Fixture

- ❖ Premium Faucets
- ❖ Fiberglass Shower with Curtain
- ❖ Exterior GFI Outlet
- ❖ LED Interior Lights
- ❖ Solid Wood Cabinetry with Raised Panel Doors
- ❖ 20-Gallon Electric Water Heater
- ❖ 100-Amp Electric Panel
- ❖ Under Counter Mini Fridge
- ❖ Laminate Countertops with Wood Edging
- ❖ Fiberglass Exterior Doors with Privacy Blinds
- ❖ Hotel Style HVAC Cut-Out & Electrical Wiring
- ❖ Exterior Faucet

AVAILABLE OPTIONS

- ❖ Vinyl Wrapped Drywall
- ❖ 50-Amp RV Style Power Cord
- ❖ Exposed 2X4 Rafters
- ❖ Solid Surface Countertops
- ❖ Wood Framed Bunkbeds
- ❖ Luxury Bedroom Furniture Package
- ❖ Hotel Style HVAC Unit
- ❖ Engineered Wood Flooring
- ❖ 8-Foot Porch
- ❖ 29-Gauge Painted Metal Roof
- ❖ 50-amp RV-style pigtail
- ❖ Gas On Demand Water Heater